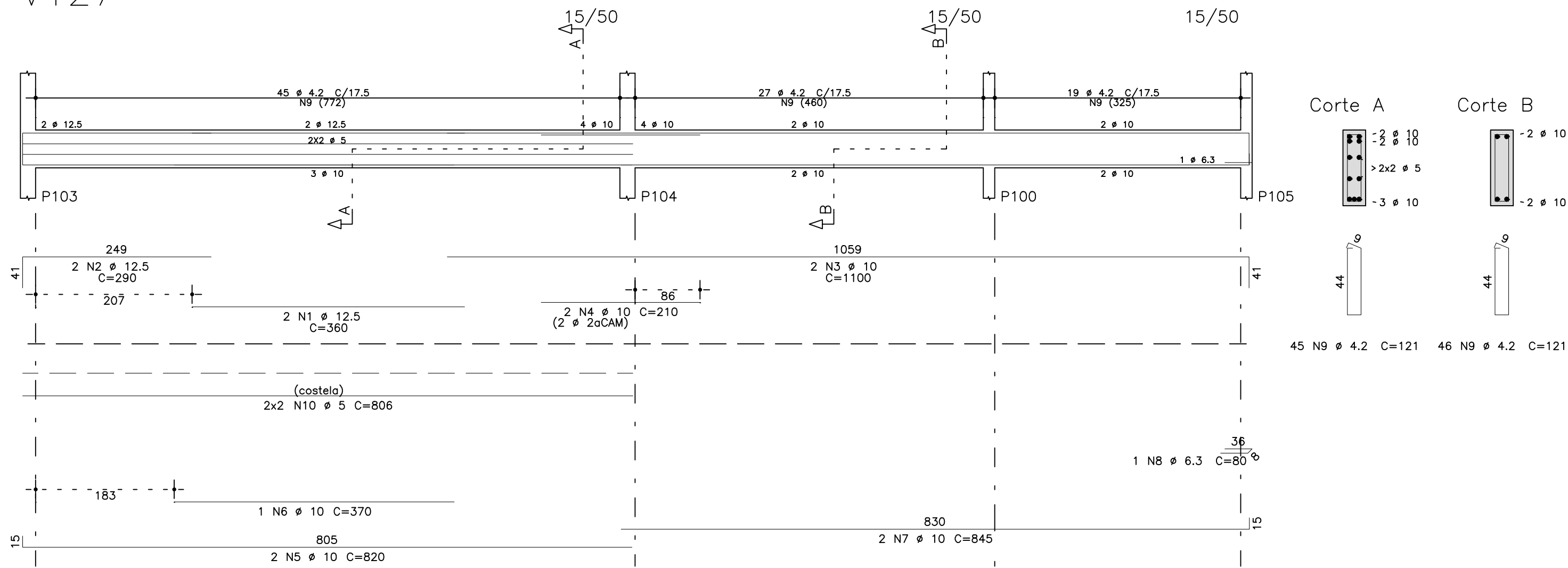
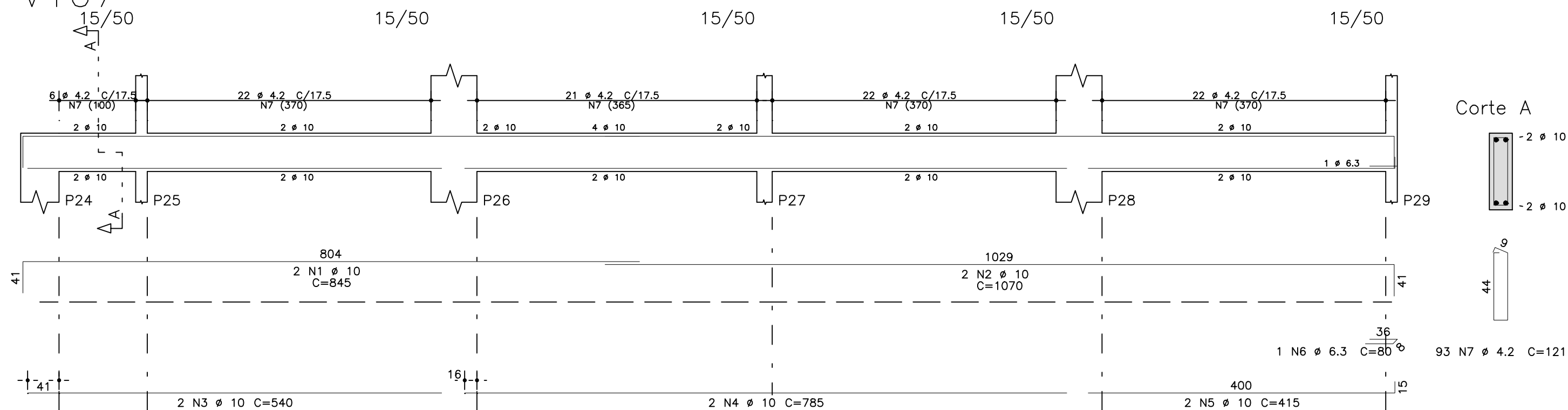


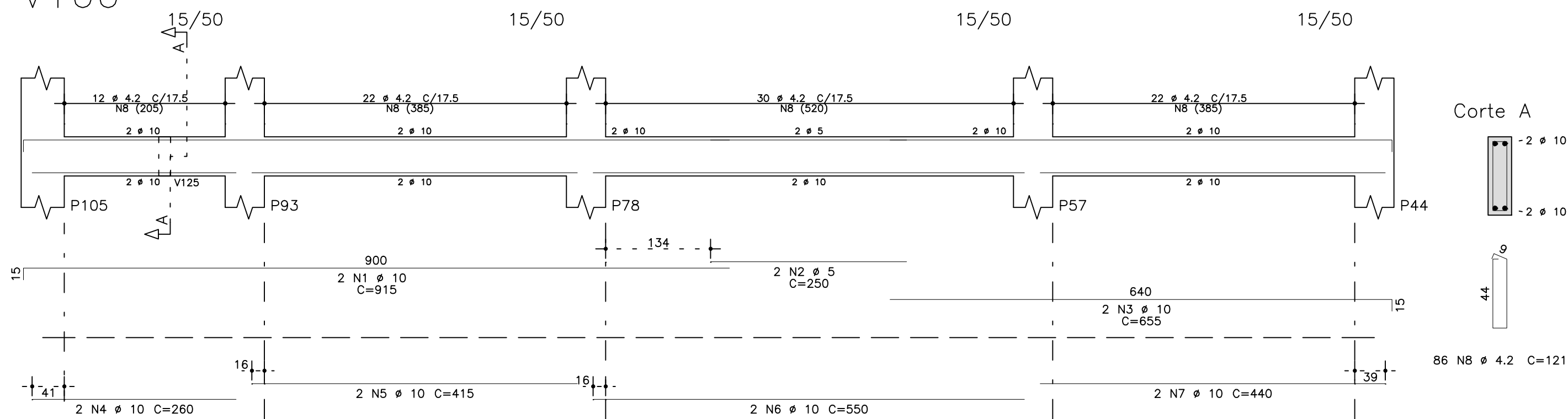
V127



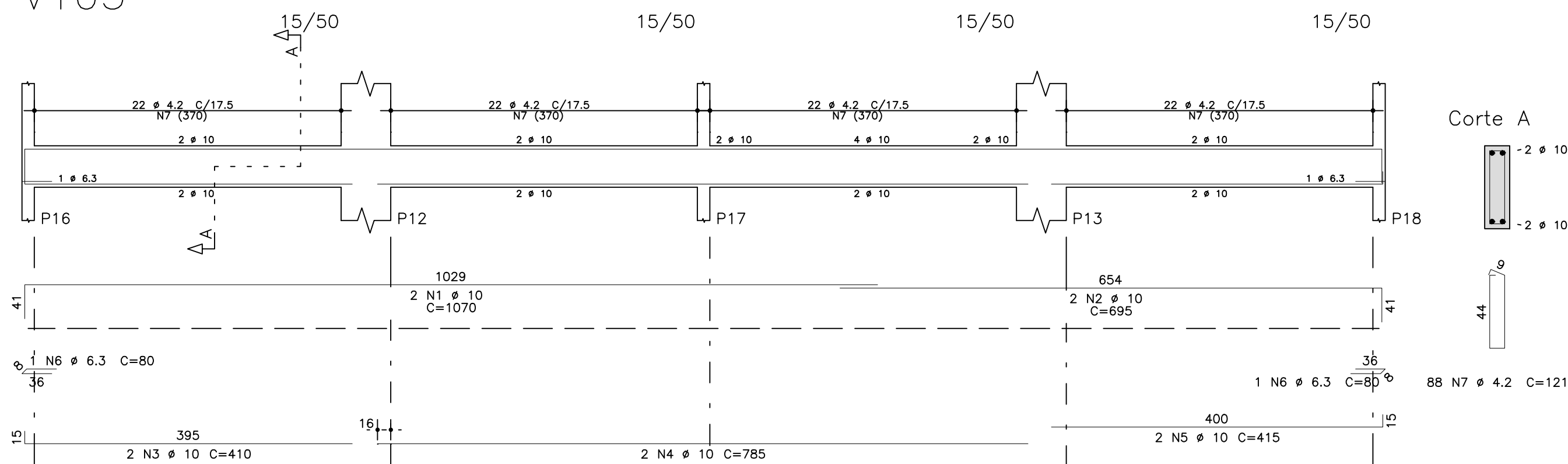
V107



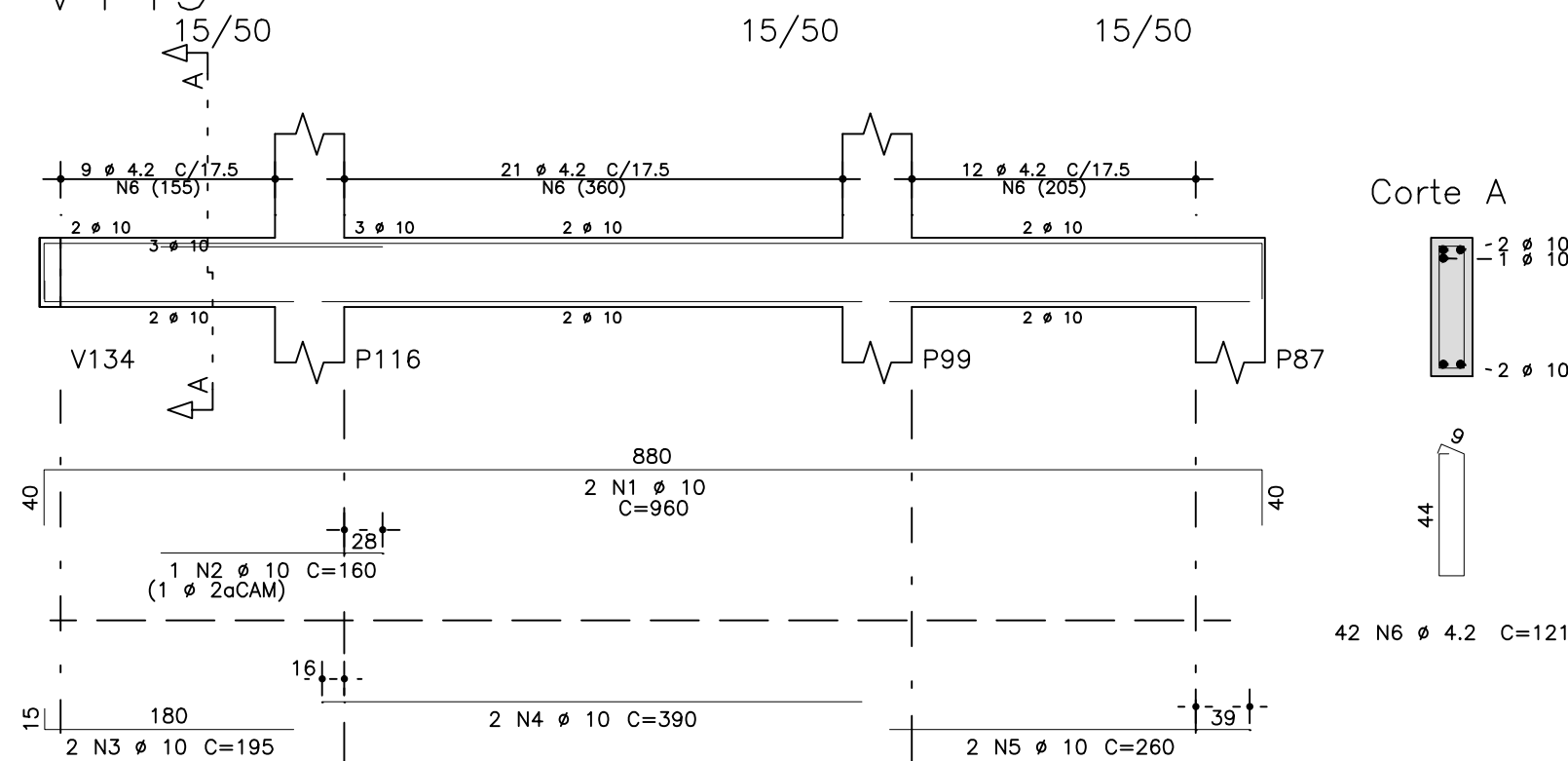
V166



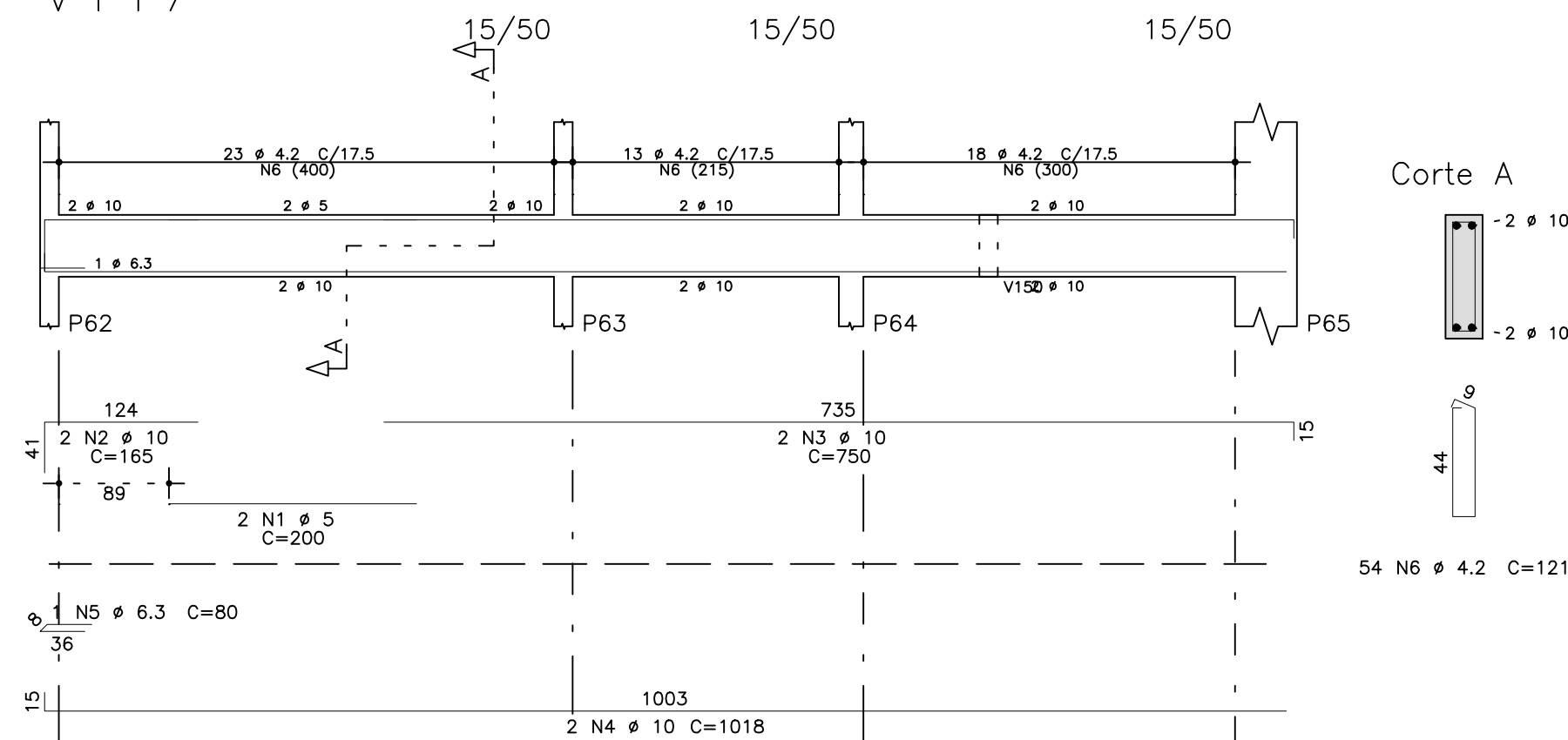
V105



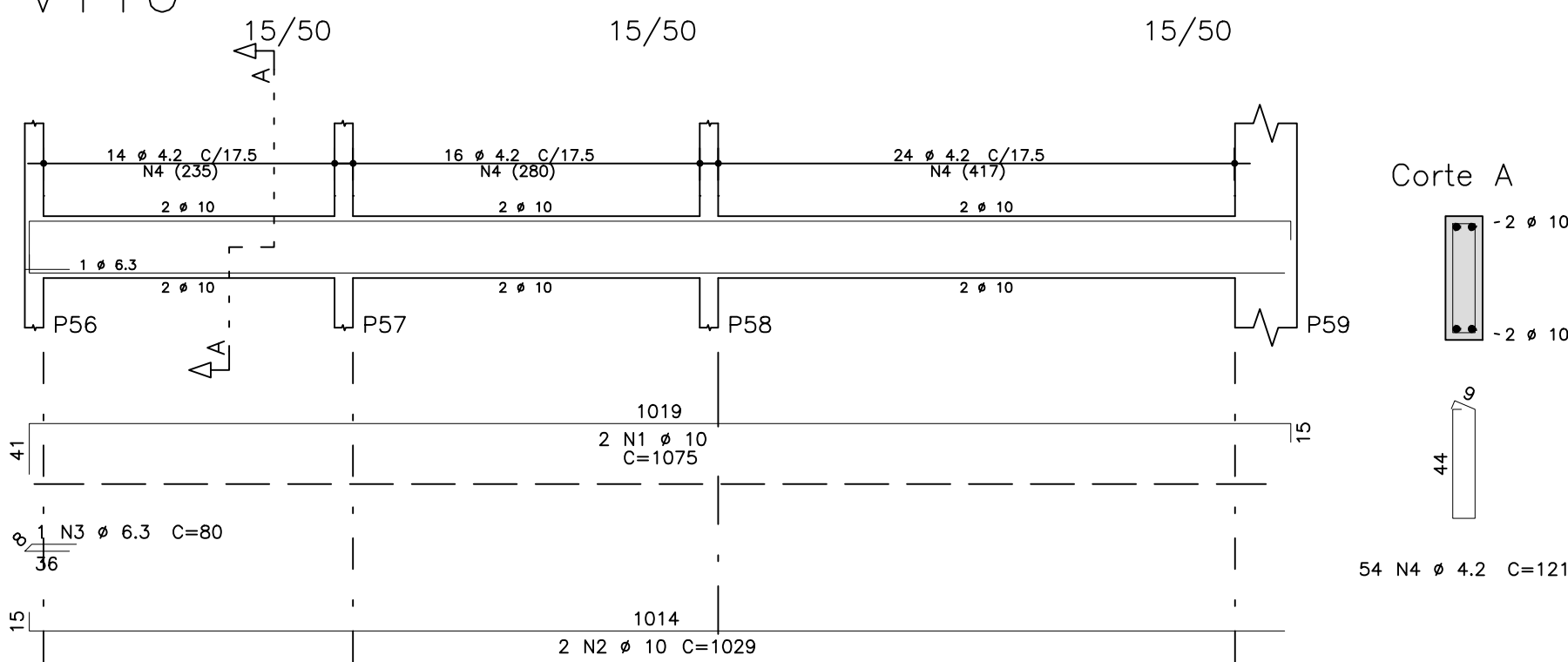
V149



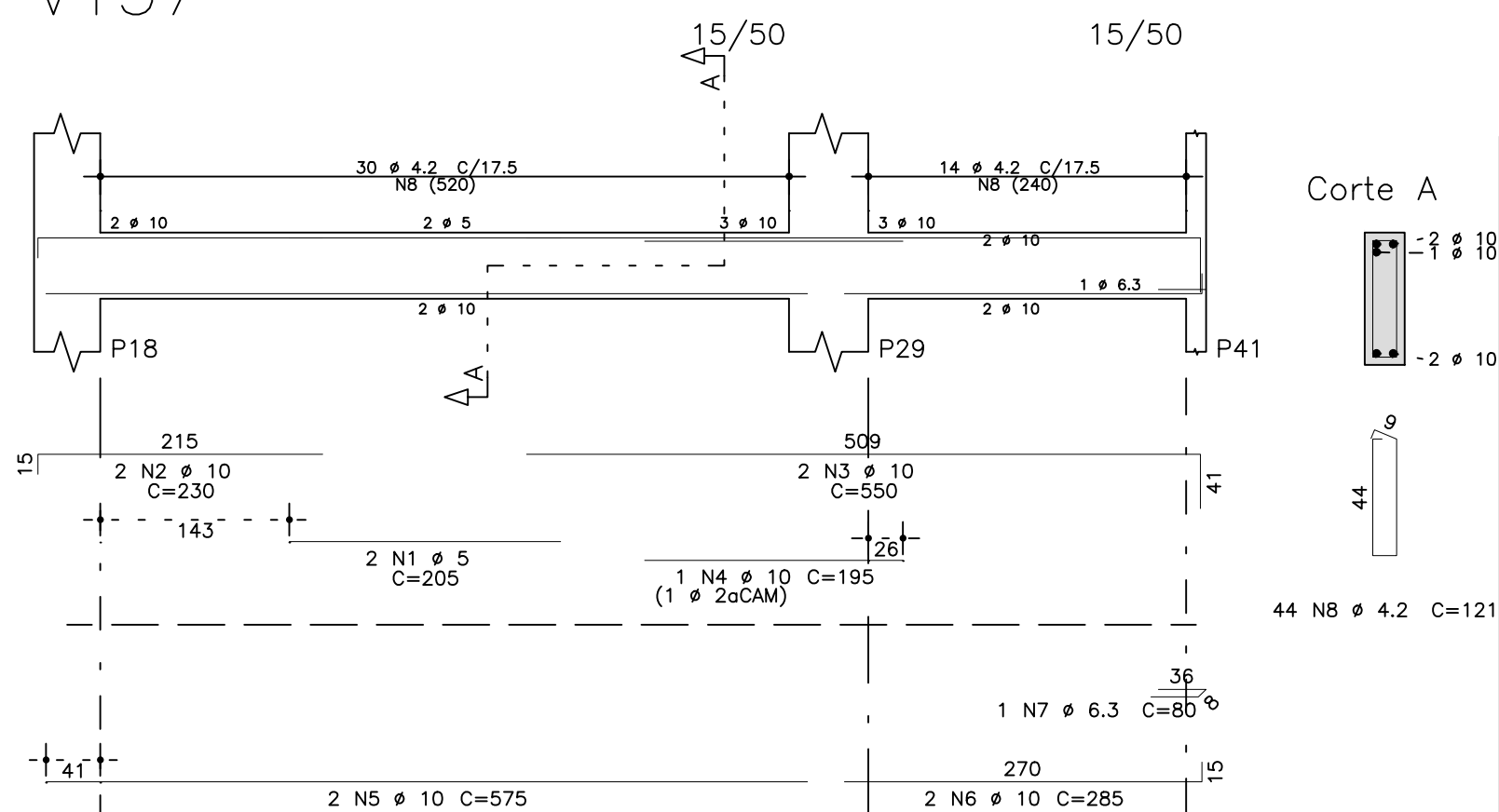
V117



V116



V157



	AÇO	POS	BIT (mm)	QUANT	COMPRIMENTO	
					UNIT	TOTAL (cm)
V105	50A	1	10	2	1070	2140
	50A	2	10	2	695	1390
	50A	3	10	2	410	820
	50A	4	10	2	785	1570
	50A	5	10	2	415	830
	50A	6	6.3	1	80	160
	60B	7	4.2	88	121	10648
V107	50A	1	10	2	845	1690
	50A	2	10	2	1070	2140
	50A	3	10	2	540	1080
	50A	4	10	2	785	1570
	50A	5	10	2	415	830
	50A	6	6.3	1	80	160
	60B	7	4.2	93	121	11253
V116	50A	1	10	2	1075	2150
	50A	2	10	2	1029	2058
	50A	3	6.3	1	80	160
	60B	4	4.2	54	121	6534
V117	60B	1	5	2	200	400
	50A	2	10	2	165	330
	50A	3	10	2	750	1500
	50A	4	10	2	1018	2036
	50A	5	6.3	1	80	160
	60B	6	4.2	54	121	6534
V127	50A	1	12.5	2	360	720
	50A	2	12.5	2	290	580
	50A	3	10	2	1100	2200
	50A	4	10	2	210	420
	50A	5	10	2	820	1640
	50A	6	10	1	370	740
	50A	7	10	2	845	1690
	50A	8	6.3	1	80	160
	60B	9	4.2	91	121	11011
	60B	10	5	4	806	3224
V149	50A	1	10	2	960	1920
	50A	2	10	1	160	160
	50A	3	10	2	195	390
	50A	4	10	2	390	780
	50A	5	10	2	260	520
	60B	6	4.2	42	121	5082
V157	60B	1	5	2	205	410
	50A	2	10	2	230	460
	50A	3	10	2	550	1100
	50A	4	10	1	195	390
	50A	5	10	2	575	1150
	50A	6	10	2	285	570
	50A	7	6.3	1	80	160
	60B	8	4.2	44	121	5324
V166	50A	1	10	2	915	1830
	60B	2	5	2	250	500
	50A	3	10	2	655	1310
	50A	4	10	2	260	520
	50A	5	10	2	415	830
	50A	6	10	2	550	1100
	50A	7	10	2	440	880
	60B	8	4.2	86	121	10406

RESUMO AÇO CA 50-60			
AÇO	BIT (mm)	COMPR (m)	PESO (kg)
60B	4.2	668	73
60B	5	45	7
50A	6.3	6	1
50A	10	422	260
50A	12.5	13	13
Peso Total		60B =	80 kg
Peso Total		50A =	274 kg

ckc 250. kg/cm2

Schuring & Schuring Ltda. Escritório Técnico B.E.SCHURING - Projetos de Engenharia Av. XV de Novembro, 489 - Porto 2o. Andar - Cuiabá MT Fone: (555) 321.8999 - Fax: (555) 623.5066 - Email: - schuring@terra.com.br	
PROJETO: PROPRIETÁRIO: PREFEITURA MUNICIPAL VARZEA GRANDE MT RESP. TEC. EXECUCÃO: OBRA: EMEB ALINO FERREIRA MAGALHAES	END.: AV. Verdão esq. c/ Rua "B" PARQUE DO LAGO - VARZEA GRANDE
AUTORES DO PROJETO: ASSUNTO: DET VIGAS BALDRAME	
Benedito Eliseu Schuring Eng.Civil- CREA 715/D-MT	PEÇAS DETALHADAS: V105 / V107 / V116 / V117 / V127 / V149 V157 / V166
Andre Luiz Schuring Eng.Civil- CREA 8697/D-MT	FECH: 250 VERIFICAÇÃO: MEDIDA NA OBRA DATA: FOLHA No. 29